

Installation Instructions for Hospital ERP System (AP)

Server Machine

SQL Server installation

Step 1: First install the SQL Server on the server machine.

(SQL Server 2005 or above)

While installing the SQL Server, it asks for “Authentication Mode”,

Select “Mixed Mode”

After selecting mixed mode, it will prompt you for the password for the SQL server admin account (name sa), type any password there and remember the password

Proceed with all the messages and steps as per the installation of SQL Server.

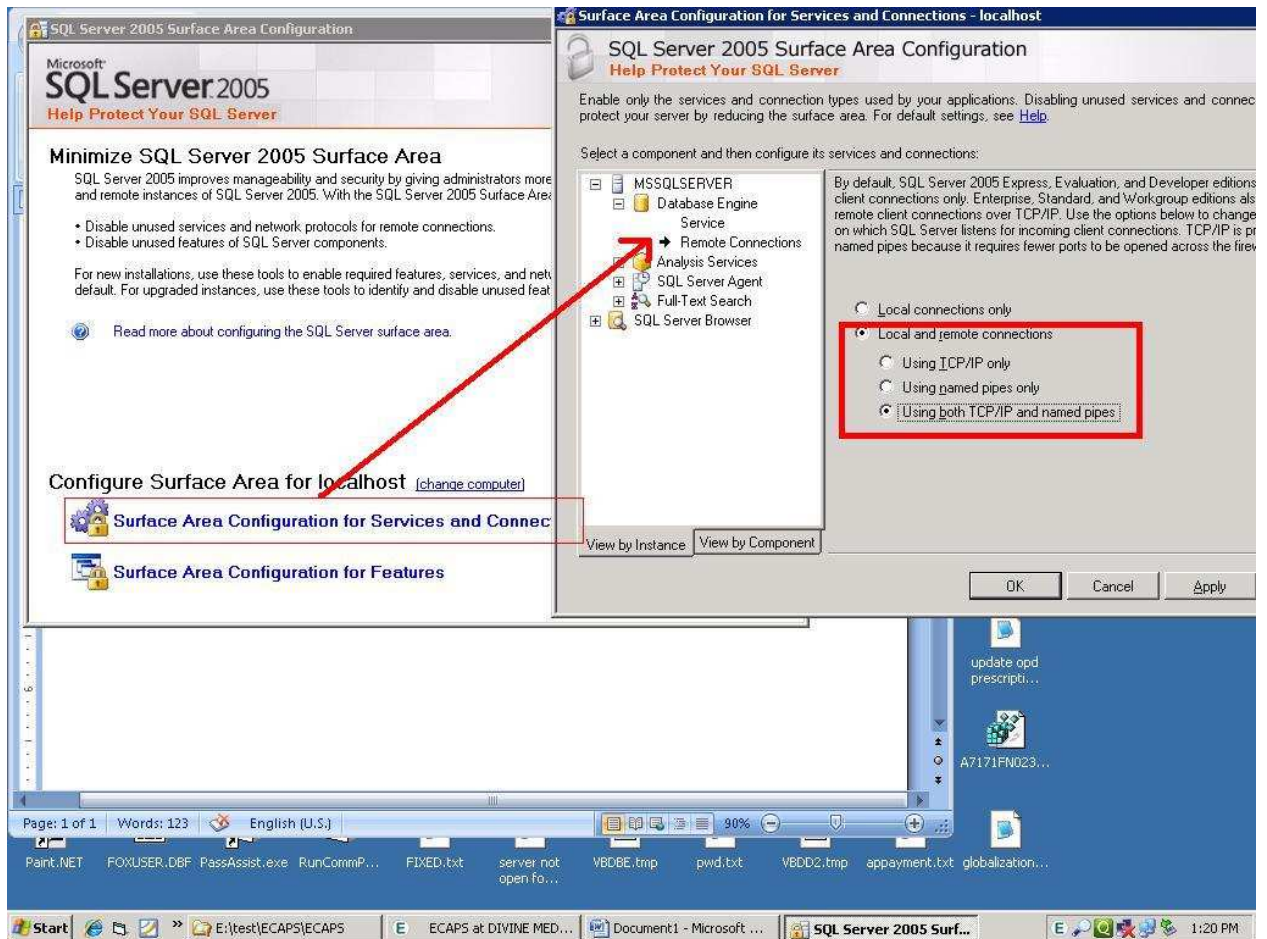
Step 2: Make sure that the server machine disables the firewall for SQL Server Port (By Default it is 1433).

Step 3: This step is applicable if you have installed SQL 2005.

Goto Start->Programs->Microsoft Sql Server 2005 ->Configuration Tools-> SQL Server Surface Area Configuration

Choose the following options as shown below

Installation Instructions for Hospital ERP System (AP)



Step 4: Restart the SQL Server

Step 5: Create a new database with name AP in your SQL Server Management studio

(While creating a new database, it ask for the location for Database Files location, Preferably create a new folder in your Hard-Disk say D:\APData and choose that path)

It is advisable not to choose the System Disk (C:)

Step 6: Create a new database with name APLAB in your SQL Server Management studio

It is advisable not to choose the System Disk (C:)

Step 7: Note down the server name (database machine name) and the databases name (AP and APLAB) since we need them while setting up the software.

Installation Instructions for Hospital ERP System (AP)

AP Software Installation

Step 1: Run the MasterSetup from the installation CD

Just follow the steps as defined in the setup.

Step 2: After installing MasterSetup , run the exe “APSecSet” (AP Security Settings)

Choose Type of Database

Access Sql Server Oracle

Driver Name {SQL Server}

Sql Server Settings

Server Name Your Server Name

DataBase Name AP

User ID sa

Password

Change ver 2.0

When you will run this it will ask for “Database Type “

Choose “SQL Server”, then it will ask for Server Name, Database name, User Name and password

Server Name is your database server machine name

Database name is “AP” which we just created

User name is “sa” for which we supplied the password while installing the SQL Server

Passowrd is the password which we supplied.

Installation Instructions for Hospital ERP System (AP)

Now we are ready with running the software

Step 3: Create a new folder AP in your directory and copy all the exe files from the CD

Make sure that the folder in which you are copying the files have the write permissions for the user from which the user account will be running the software

Step 4: Configuration for AP, Just run the AP.exe from this folder, it will first ask you the Database connectivity, Choose SQL Server and the database name "AP" and the server name.

The screenshot shows a window titled "Connection to AP Settings". It has a light blue background. At the top, there's a section "Choose Type of Database" with three radio buttons: "Access", "Sql Server" (which is selected), and "Oracle". Below this is a "Driver Name" dropdown menu showing "{SQL Server}". Underneath is a section "Sql Server Settings" with a "Server Name" text box containing "Your Server NAME", a "DataBase Name" text box containing "Ap", and two radio buttons: "TCP/IP Connection" (selected) and "Net BIOS". At the bottom of the window are two buttons: "Save" and "Advanced".

Step 5: It will take little time first time, as it will create the database structure.

Step 6: Now a login screen will popup

Default user name is: manager1

Password manager1

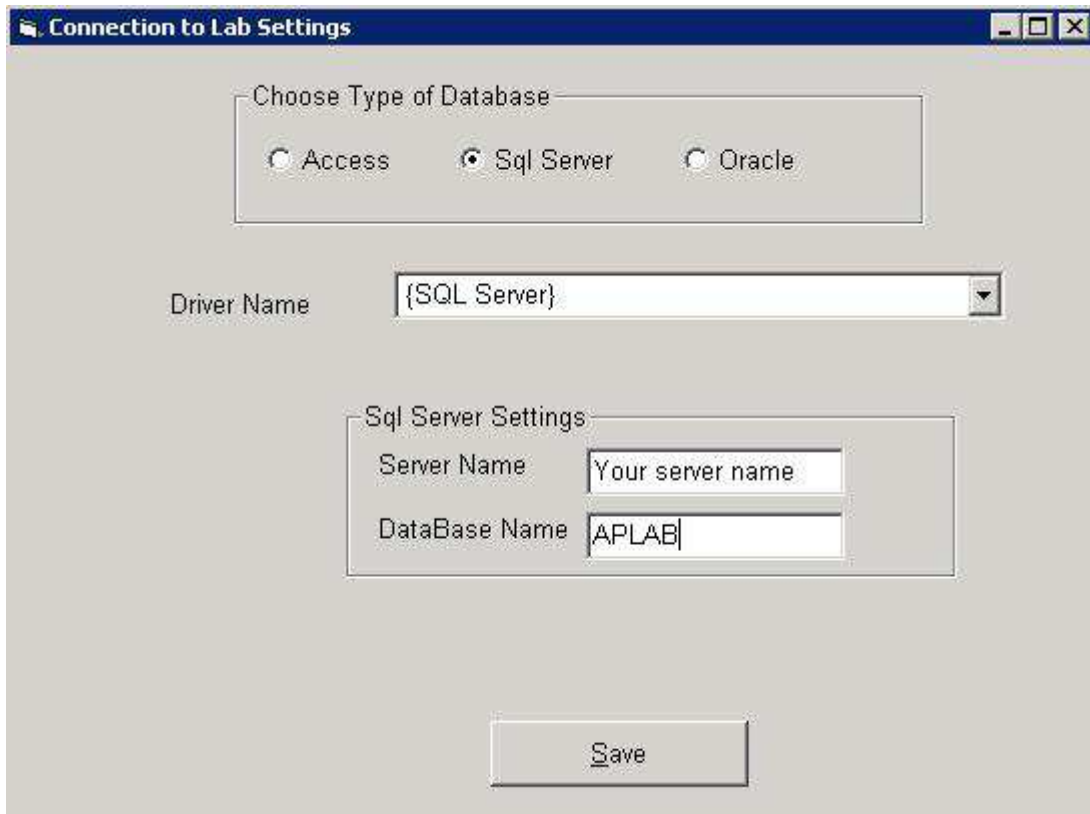
Step 7: You will be shown the welcome screen with the list of Admitted patients. Just follow the AP manual to create different masters / users etc

Installation Instructions for Hospital ERP System (AP)

Step 8: Pathological Lab / RadioLogy Software installation

Please run the "APLAB.exe" from your folder, It will ask for the database linking.

Very Important, Choose LAB Database here



The screenshot shows a window titled "Connection to Lab Settings". It contains the following elements:

- Choose Type of Database:** Three radio buttons are present: "Access", "Sql Server" (which is selected), and "Oracle".
- Driver Name:** A dropdown menu currently displays "{SQL Server}".
- Sql Server Settings:** Two text input fields are shown: "Server Name" with the text "Your server name" and "DataBase Name" with the text "APLAB".
- Save:** A button labeled "Save" is located at the bottom center of the dialog.

Step 9: It will connect to database and start creating structure. This may take little time for the first time.

Step 10: It will then ask for Login Id/ Password, Default is

Login Id: manager1

Password manager1

Step 11: It will then ask for AP Database settings, remember put here AP Database details

Step 12: You are now ready to use the lab software. Further refer to manual how to create tests/ sub tests and link to service items in AP.

Step 13: ECAPS installation

Installation Instructions for Hospital ERP System (AP)

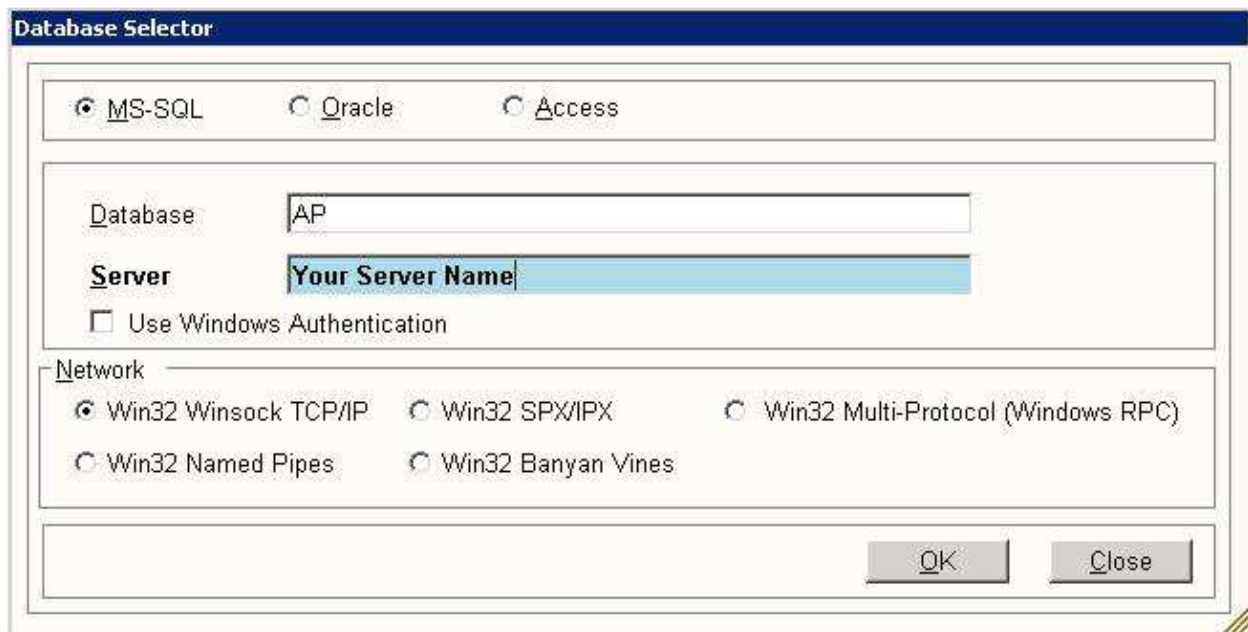
Run the dotnetFx.exe from the installation CD (This will install Microsoft Dot Net Framework 2.0 on your machine). This installation might require some pre-requisite like Windows installer which we have provided. Also some operating systems come with the pre-installation of Dot Net Framework, so in that case no installation of this is required.

Step 14: Run the ECAPSDemoSetup

Follow the instructions given and install the ECAPS. It will ask for Database linking, select there Database Name “AP” and server Name “Your server Name”

Step 15: Copy the ECAPS Folder from the installation disk to the above folder

Step 16: Run the ECAPS.exe



You will be prompted for user name and password after this

Default user name is manager1

Password manager1

Installation Instructions for Hospital ERP System (AP)

On all the client machines you need to install the MasterSetup.exe from the CD and then follow the steps 3 to Steps 16

Now whenever you get a new upgrade in the AP / APLAB / ECAPS software you have to just replace the files with the latest ones as on our web-site.

Installation Instructions for Hospital ERP System (AP)

IIS Server application setup

You need to install the IIS Server on your Application Server. Preferably we should have 2 servers, 1 for the database and 1 as the Application Server. You may install IIS on the same machine as the Database server, but that is not recommended.

Please ask your hardware vendor to setup an IIS Server for you. Minimum version should be 6.0. (Different operating systems have different ways of installing the IIS Server).

After you have installed the IIS Server, please do the following steps

Step 1 : Confirm that IIS is working in your server machine, Just goto Internet explorer and type <http://localhost> It should not give the error message that “Page Not Found”

Step 2: Download DotNetFrameWork 4.0 from Microsoft Web Site, and follow the defined steps in the installation to install the IIS Framework. This may require a Computer Restart after installing the DotNet Frame work 4.0

Step 3: Create a new directory say “OnlineAP” in C Drive.

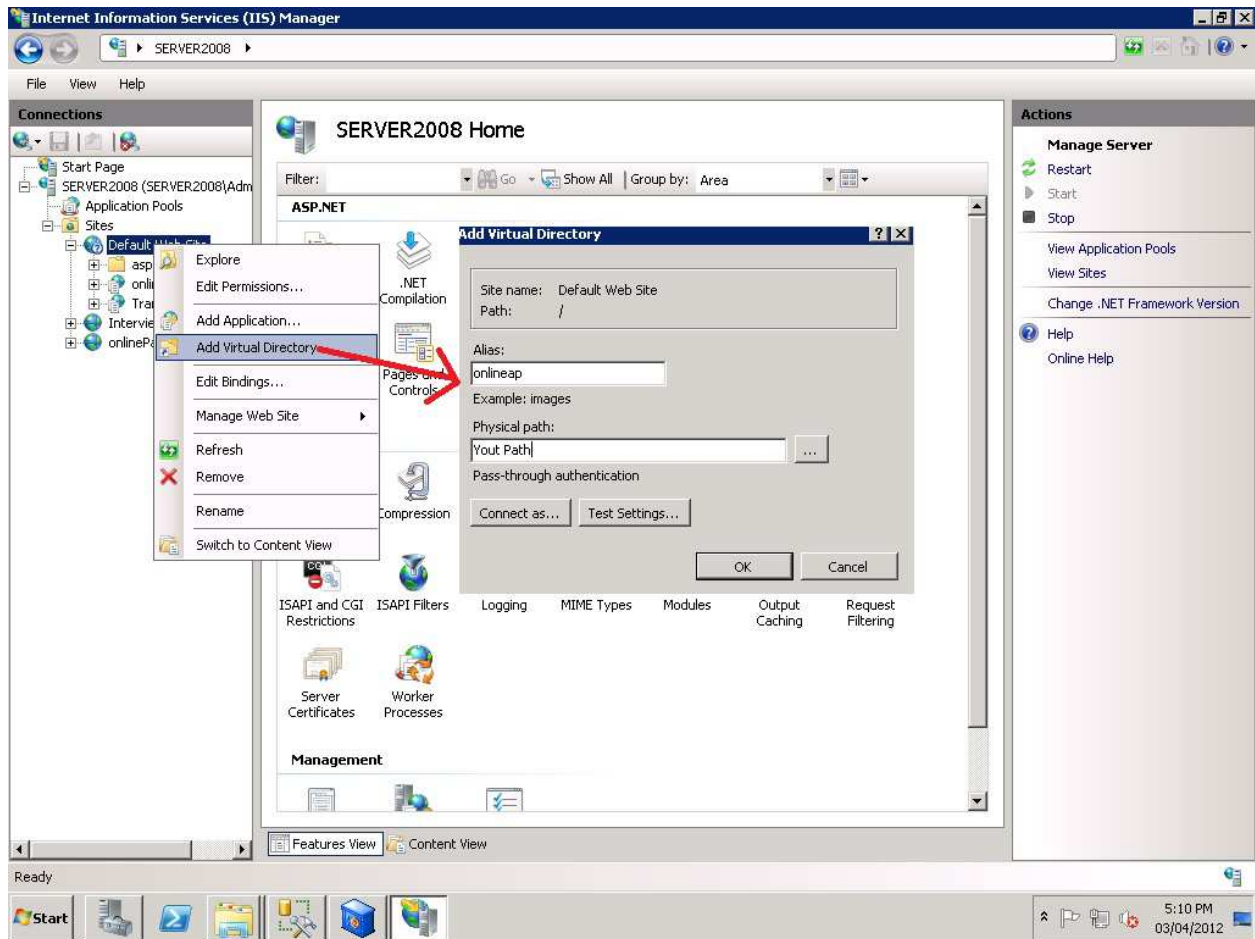
Step 4: Copy onlinepatientmanagement.zip from the installation disk and unzip this in the OnlineAP folder just created.

Step 5: Now run the IIS Manager, either using the short cut in Windows or type “inetmgr” at the run command

(Following Steps to create a virtual directory are shown in IIS 7.0)

Step 6: Now run the following step

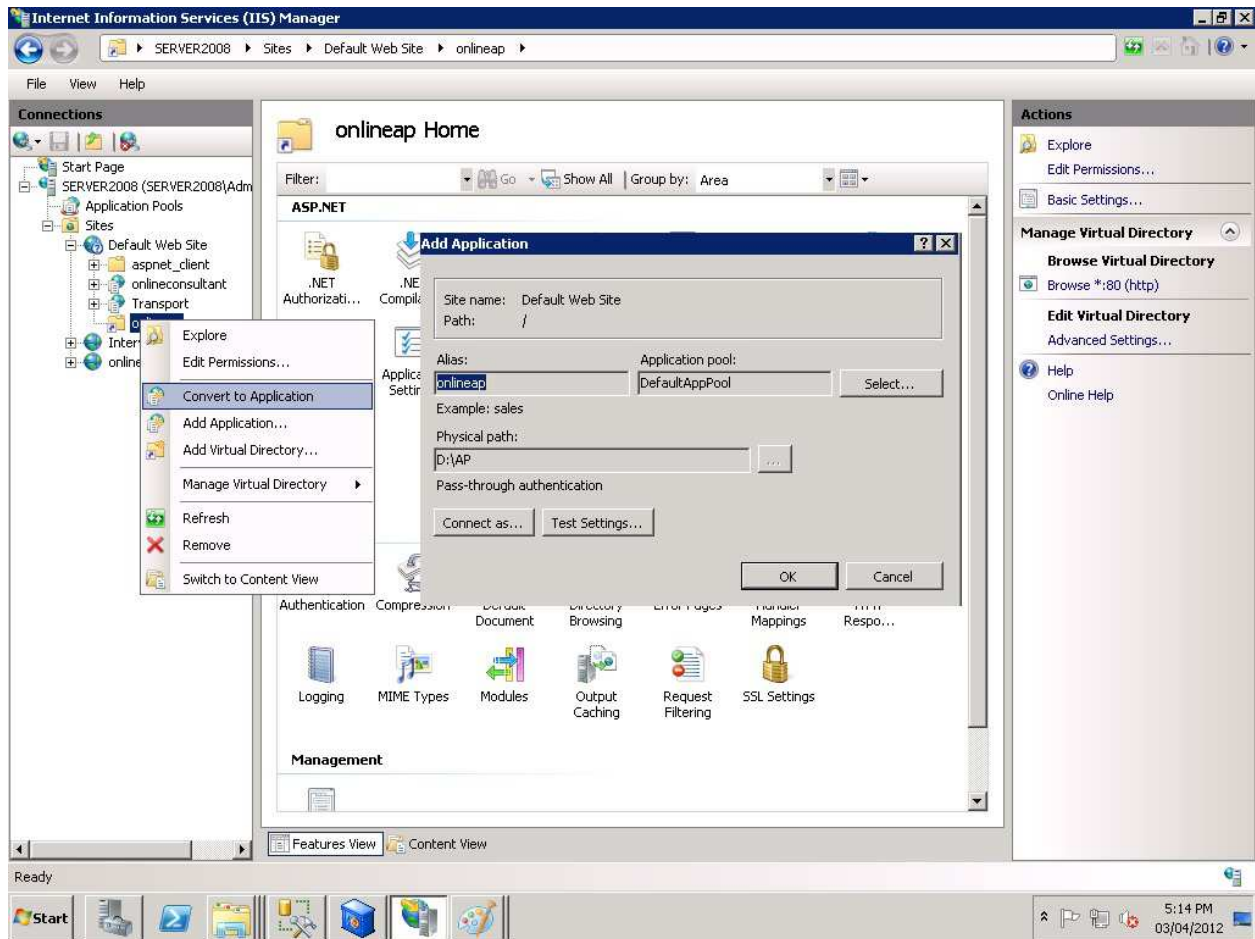
Installation Instructions for Hospital ERP System (AP)



Here choose the Physical path as the directory in which you have unzipped onlinepatientmanagement and in the alias choose ap

Step 7 Now convert this to application

Installation Instructions for Hospital ERP System (AP)



Here make sure that in “Select” button after the Application Pool you have selected

“ASP.NET 4.0”

Also click on Test Settings to make sure that you have correct permissions to connect to the server.