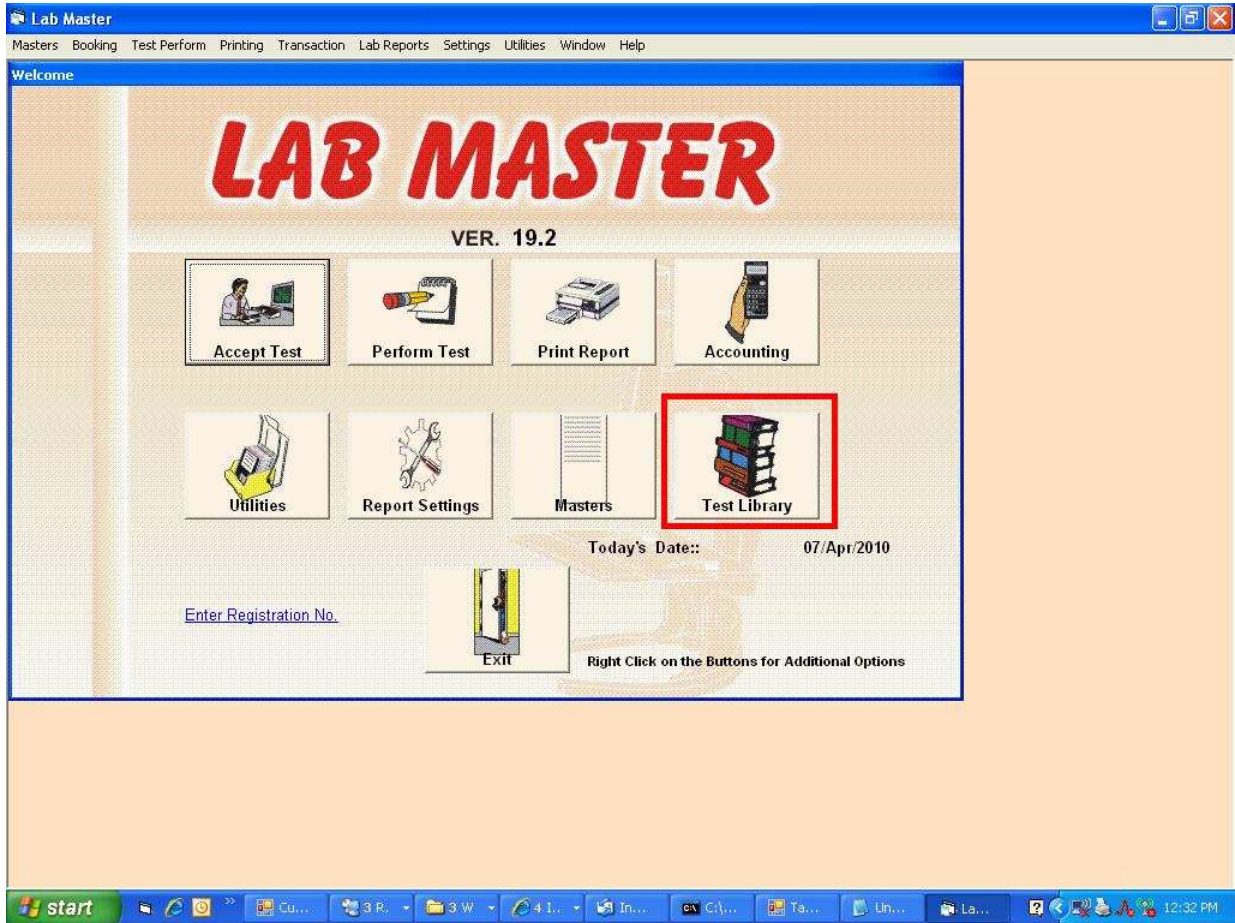


How to Set Formula in Reports

Open Test Library	2
Formula rules- Pre Checkup	3
Apply the Rule	4

Open Test Library



Formula rules- Pre Checkup

Selected Test : BIOCH

Refresh Exit

F7: To Change Serial Nos.
F8: Ordering of Grid
F9: Adjusting Sl. Nos
F3: Viewing Sub Tests

Code	Test Name	SNO	code	Name	RATE	LBOUND	UBOUND	UN
BIOCH	BIOCHEMISTRY TEST	1	BS	BLOOD SUGAR (F)	40	70	110	m
HAEMA	HAEMATOLOGY ROUTINE	2	USF	URINE SUGAR (F)	0			
LIVER	LIVER FUNCTION TEST	3	_117	BLOOD SUGAR (PP)	40	80	140	m
URINE	URINE EXAMINATION	4	USP	URINE SUGAR (PP)	0			
URINE001	URINE CHEMISTRY	5	_118	BLOOD SUGAR (R)	40	70	140	m
SEROL	SEROLOGY TEST	6	LT	S.BILIRUBIN (TOTAL)	80	0.1	1.2	m
STOOL	STOOL TEST	7	_120	S.BILIRUBIN (DIRECT)	0	<	0.3	m
LIPID	LIPID PROFILE	8	_121	S.BILIRUBIN (INDIRECT)	0	0.1	1	m
HORMO	HORMONE ASSAYS	9	_122	S.G.O.T	80	05	40	m
HISTO	HISTOPATHOLOGY	10	_123	S.G.P.T	80	UPTO	40	U/
TORCH	TORCH PROFILE	11	_124	TOTAL PROTEINS	80	6.0	8.0	gn
SEMEN	SEMEN ANALYSIS	12	_125	ALBUMIN	0	3.7	5.3	gn
MICRO	MICROBIOLOGY	13	_126	GLOBUMIN	0	2.3	3.6	gn
CULTU	CULTURE REPORT	14	127	A:G RATIO	0	1.0	2.3	

Main Groups Only

Add New Test Head Delete Test Head

Add New Test Delete Test

Suppose we want the formula on S.Bilirubin

$$\text{S.Bilirubin (Indirect)} = \text{S.Bilirubin (Total)} - \text{S.Bilirubin (Direct)}$$

First thing we need to do is to note down the code for S.Bilirubin Total which is "LT"
 and code for S.Bilirubin (Direct) is "_120"

Apply the Rule

TEST DETAILS

Code: 121 Type Of Test: Normal Range From: Range upto: Formula: {LT} - {_120}

Name: S.BILIRUBIN (INDIRE... Group Under: _121

Rate: 0 Units: mg/dl

Low Bound: 0.1 Upper Bound: 1 Advance

Report Coll. Days: 0 Time: 0 (In Hours.) Comments:

Select Day: Search Parameters: Print Comments:

Remarks: Short name:

Interpretations Define Table Options Precautions

Views	Edit

F2: For Adding Interpretation F6: For Deleting Row F8: For Adding Row

OK Cancel Edit Test Item

For Making Formula :: {DLC}+{TLC} / {100}
For Condition :: {DLC}+{TLC} ~ ~ 100

Now we double clicked on the S.Bilirubin (Indirect) and go to the formula field and write there in curly braces { } the codes, so we will write {LT} - {_120}

similarly if you want a formula like S.Bilirubin (Total) / S.Bilirubin (Direct) We will write in formula {LT} / {_120}

And if you want to use want to use some numeric constants for e.g. Divide by 5 we will use "|" before 5 so the formula will be

We will write in formula {LT} / {5}